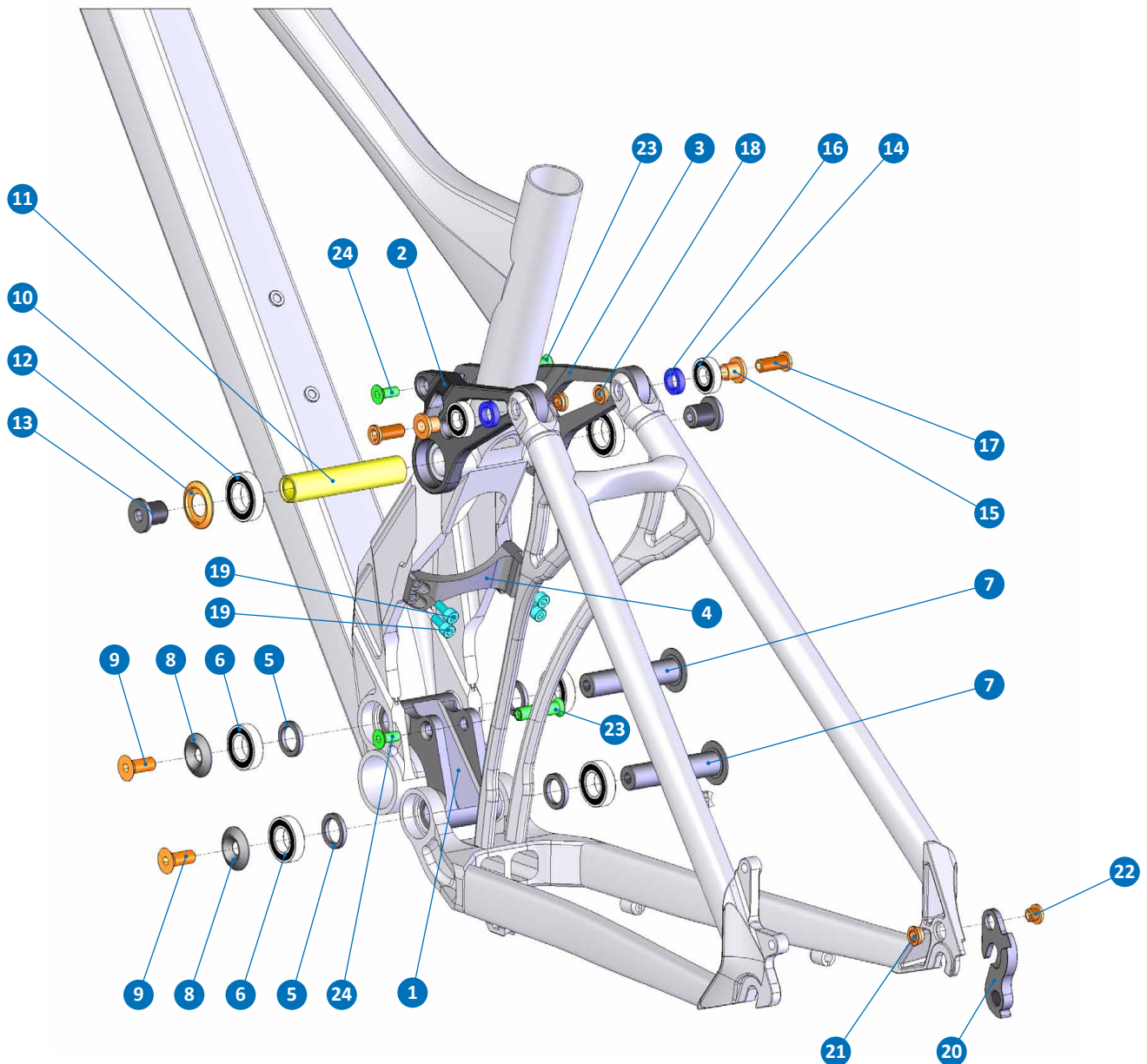


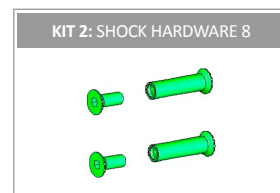
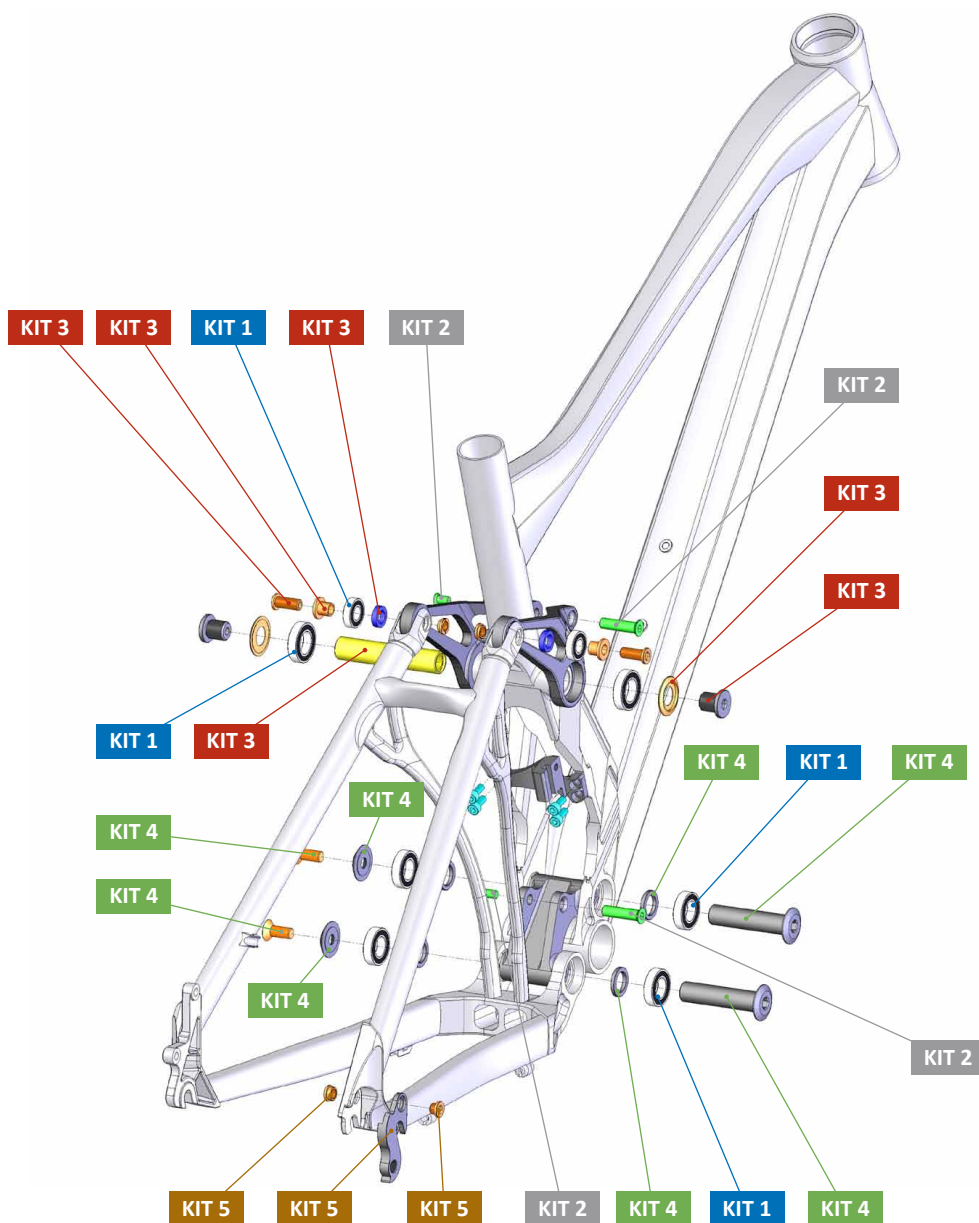
DUNE



ITEM No.	DESCRIPTION	QTY.
1	LOWER LINK	1
2 - 3	UPPER LINK	1
4	DERAILLEUR HOLDER	1
5	WASHER 15x22x3	4
6	6902 BEARING	4
7	D15x65L BOLT	2
8	D27xd8 BEARING CAP	2
9	M8x20L-M	2
10	6903 BEARING	2
11	D17x8L NUT	1
12	D30xd15 BEARING CUP	2
13	M14x15L SCREW	2

ITEM No.	DESCRIPTION	QTY.
14	BEARING 6900-RS	2
15	12MM AXLE	2
16	D16xd10	2
17	D9-L-21L DO BOLT	2
18	D9-R-7 DO BOLT	2
19	M5*10L SCREW	4
20	M037 HANGER	1
21	SW-D9-L HANGER BOLT	1
22	SW-D9-R HANGER BOLT	1
23	SLEEVE BOLT D8x32L	2
24	SCREW BOLT M6xP1.0	2

DUNE



PART NUMBER	DESCRIPTION	COMPONENTS
099.12024	KIT 1: ZERO BEARING KIT 3	BEARING 6900-RS (x2) / 6903 BEARING (x2) / 6902 BEARING (x4)
099.13116	KIT 2: SHOCK HARDWARE 8	SLEEVE BOLT D8x32L (x2) / SCREW BOLT M6xP 1.0 (x2)
099.12025	KIT 3: UPPER LINK KIT 6	M14x15L SCREW (x2) / D30xd15 BEARING CUP (x2) / D17x8L NUT / D9-L-21L DO BOLT (x2) / 12MM AXLE (x2) / D16xd10 (x2) / D9-R-7 DO BOLT (x2)
099.12026	KIT 4: LOWER LINK KIT 4	D15x65L BOLT (x2) / WASHER 15x22x3 (x4) / D27xd8 BEARING CAP (x2) / M8x20L-M (x2)
099.12020	KIT 5: HANGER KIT 5	M037 HANGER / D10x 3L / M8x5L