

- Grease
- Sealant
- Grease + Sealant

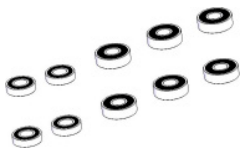
Apply grease to the shaft,
and sealant to the threads

ITEM No.	DESCRIPTION	QTY.	PART NUMBER	TORQUE
1	LOWER LINK	1		
2	UPPER LINK	1	099.16027	
3	BEARING, 6801V-2RS	4	SET 1	
4	BEARING, 6901V-2RS	6	SET 1	
5	SPACER, 27mm	1	SET 4	
6	SPACER, 3mm	2	SET 4	
7	SPACER, 3mm	2	SET 4	
8	TAPER NUT	2	SET 4	
9	PIVOT AXLE, 70.5mm	2	SET 4	8Nm
10	SPACER, 3mm	4	SET 3	
11	PIVOT AXLE, 18mm	2	SET 3	
12	PIVOT AXLE, M12	2	SET 3	11Nm
13	PIVOT AXLE	2	SET 3	11Nm
14	CHIP, LEFT, OUTER	1	DROPOUT KIT	
15	CHIP, LEFT, INNER	1	DROPOUT KIT	
16	HANGER M065	1	SET 5	
17	CHIP, RIGHT, OUTER	1	DROPOUT KIT	
18	SCREW BOLT	4	DROPOUT KIT	4Nm

ITEM No.	DESCRIPTION	QTY.	PART NUMBER	TORQUE
19	CABLE RUBBER	5	989.13010	
20	CABLE HOLDER	2	099.16004	
21	CABLE HOLDER	2	099.15012	
22	FENDER	1	099.16003	
23	SCREW BOLT	4		3Nm
24	DISC MOUNT	1	099.16007	
25	SCREW BOLT	2		8Nm
26	SLEEVE BOLT	2	SET 2	8Nm
27	CHAIN PLATE	1	099.16002	
28	SCREW BOLT	3		5Nm
29	SPACER	2	SET 4	
30	SCREW BOLT	2	SET 4	10Nm
31	SEAT CLAMP	1	099.15013	
32	SCREW BOLT	1		5Nm
33	SPACER, 19mm	1	SET 4	
34	SCREW AXLE	1	SET 3	
35	CHAINSTAY PROTECTOR	1	099.16005	
36	SEATSTAY PROTECTOR	1	099.16006	

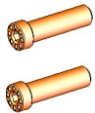
SET 1

ZERO BEARING KIT 11



SET 2

SHOCK HARDWARE ZERO 1



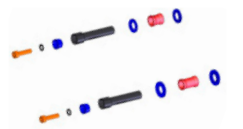
SET 3

UPPER LINK HARDWARE KIT 16



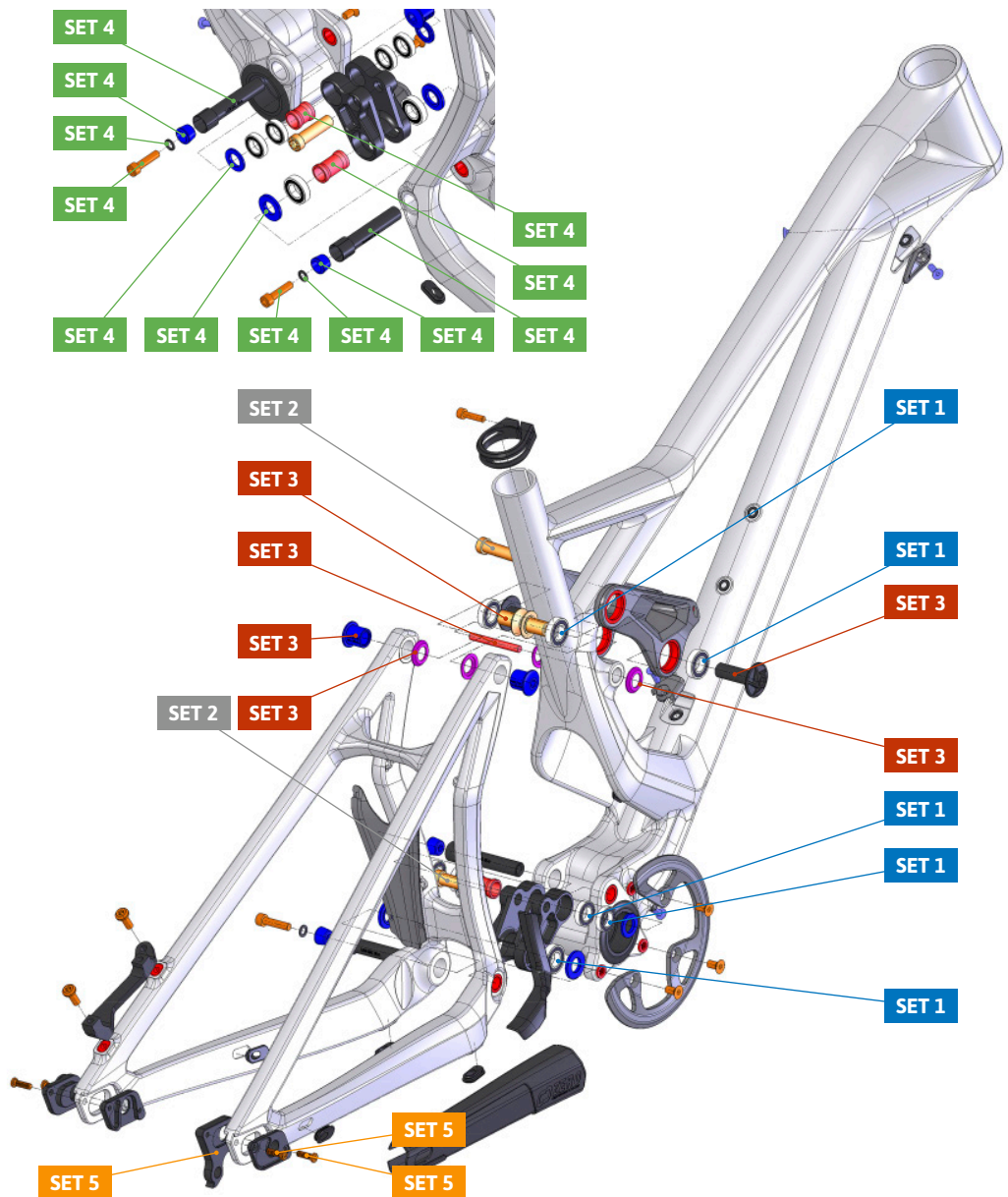
SET 4

LOWER LINK HARDWARE KIT 16



SET 5

HANGER



PART NUMBER	DESCRIPTION	COMPONENTS
099.16103	SET 1: ZERO BEARING KIT 11	BEARING 6801V-2RS (INT. 12mm. EXT 21mm) (x6) / BEARING 6901V-2RS (INT. 12mm. EXT 24mm) (x4)
099.12002	SET 2: SHOCK HARDWARE ZERO 1	BOLT M10x36 (x2)
099.16104	SET 3: UPPER LINK HARDWARE KIT 16	SCREW AXLE M6x50mm (x1) / SPACER D21.5xD12x3mm (x4) / PIVOT AXLE D12x37mm (x2) / PIVOT AXLE D16x14mm (x2) / PIVOT AXLE M12x18mm (x2)
099.16105	SET 4: LOWER LINK HARDWARE KIT 16	SPACER D23.5XD12x3mm (x2) / SPACER D20.5XD12x3mm (x2) / SPACER D10XD6X1mm (x2) / TAPER NUT 10.5mm (x2) / M6x25L-P-S SCREW BOLT (x2) / PIVOT AXLE M12X70.5mm (x2) / SPACER D16xD12x27 (x1) / SPACER D16xD12x19mm (x1)
099.00050	HANGER	HANGER M065 + SCREW BOLT (x2)
099.00052	HANGER +10mm	HANGER M065 (+10mm) + SCREW BOLT (x2)
099.16106	DROPOUT KIT DUNE C	CS-CHIP, LEFT, OUTER (x1) / HANGER M065 LEFT (x1) / CS-CHIP, RIGHT, OUTER (x1) / SCREW BOLT (x4)
099.16100	GEOMETRY KIT DUNE C S/M	HEADSET CUP, LOWER +/-1° (x1) / HEADSET CUP, UPPER, 110L +/-1° (x1) / HEADSET CUP, LOWER 0° (x1) / HEADSET CUP, UPPER 0° (x1) / CS-CHIP, LEFT, OUTER +10mm (x1) / CS-CHIP, RIGHT, OUTER +10mm (x1) / HANGER M065 LEFT +10mm (x1) / HANGER M065 +10mm (x1) / DISC MOUNT +10mm (x1) / SCREW BOLT (x4)
099.16101	GEOMETRY KIT DUNE C L	HEADSET CUP, LOWER +/-1° (x1) / HEADSET CUP, UPPER, 120L +/-1° (x1) / HEADSET CUP, LOWER 0° (x1) / HEADSET CUP, UPPER 0° (x1) / CS-CHIP, LEFT, OUTER +10mm (x1) / CS-CHIP, RIGHT, OUTER +10mm (x1) / HANGER M065 LEFT +10mm (x1) / HANGER M065 +10mm (x1) / DISC MOUNT +10mm (x1) / SCREW BOLT (x4)
099.16102	GEOMETRY KIT DUNE C XL	HEADSET CUP, LOWER +/-1° (x1) / HEADSET CUP, UPPER, 130L +/-1° (x1) / HEADSET CUP, LOWER 0° (x1) / HEADSET CUP, UPPER 0° (x1) / CS-CHIP, LEFT, OUTER +10mm (x1) / CS-CHIP, RIGHT, OUTER +10mm (x1) / HANGER M065 LEFT +10mm (x1) / HANGER M065 +10mm (x1) / DISC MOUNT +10mm (x1) / SCREW BOLT (x4)