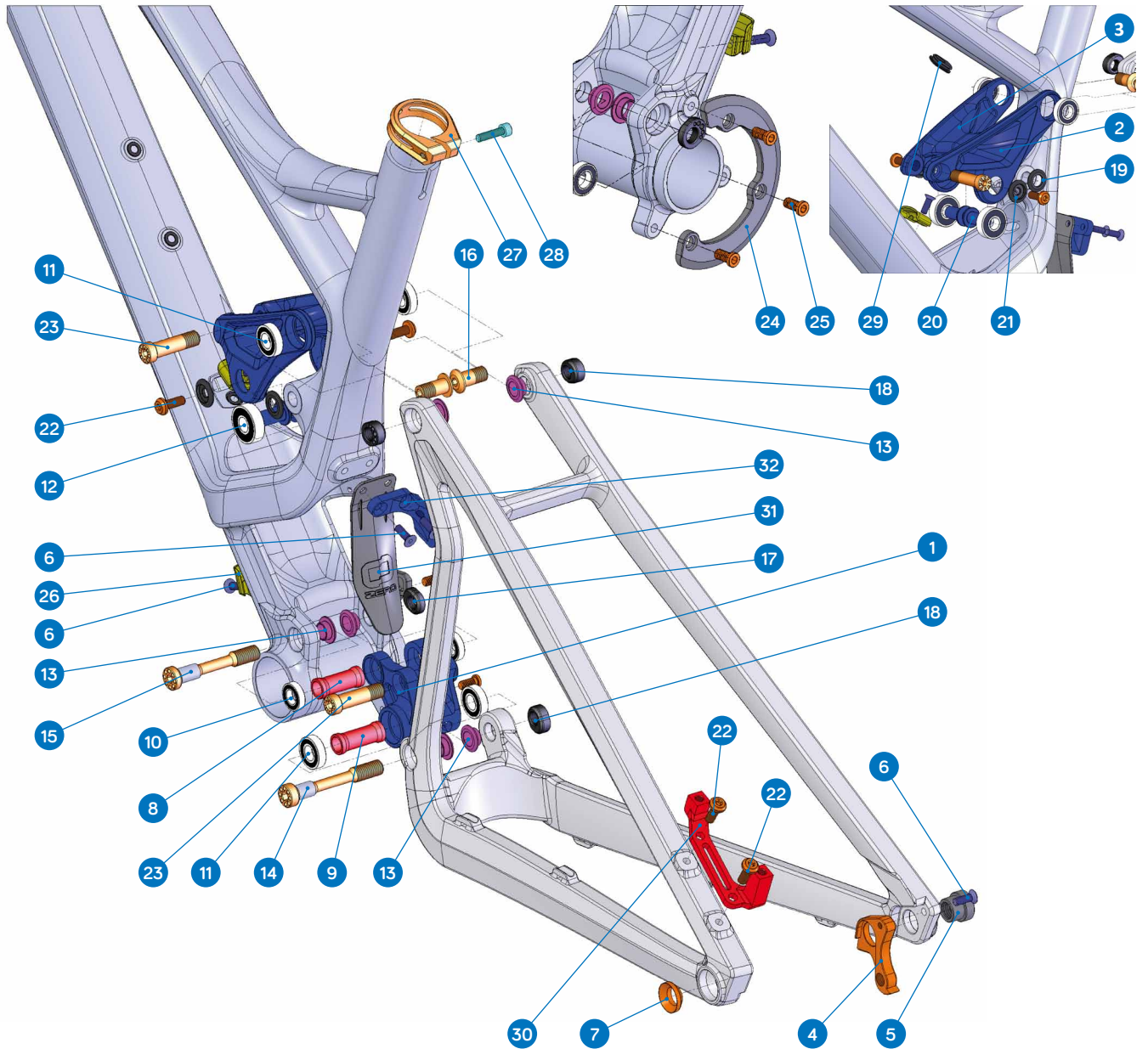


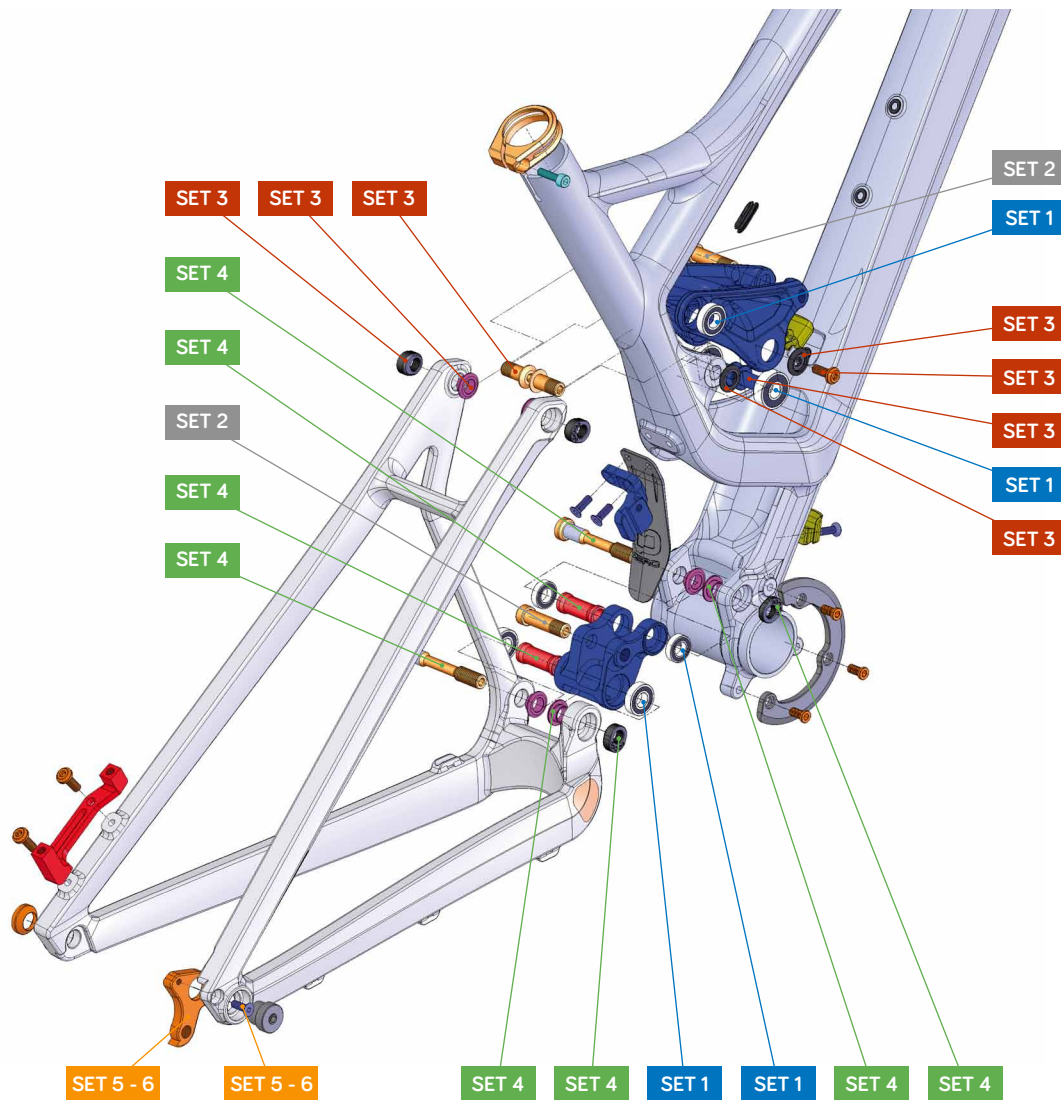
FOXY CARBON

Spare parts



| ITEM No. | DESCRIPTION | QTY. |
|----------|---|------|
| 1 | LOWER LINK | 1 |
| 2 - 3 | UPPER LINK | 1 |
| 4 | PATILLA M056 | 1 |
| 5 | HUB NUT 12X142 | 1 |
| 6 | M5x15L-M SCREW BOLT | 5 |
| 7 | WASHER 12X142 | 1 |
| 8 | SPACER D14 x d10 x 30 | 1 |
| 9 | SPACER D14 x d10 x 35 | 1 |
| 10 | BEARING 6800-2RS (INT. 10MM. EXT 19MM) | 2 |
| 11 | BEARINGO 6900-2RS (INT. 10MM. EXT 22MM) | 4 |
| 12 | BEARING 6000-2RS (INT. 10MM. EXT 26MM) | 2 |
| 13 | WASHER D18 x d10 x 6.3 | 6 |
| 14 | PIVOT AXLE M10x68 | 1 |
| 15 | PIVOT AXLE M10x64 | 1 |
| 16 | PIVOT AXLE M10x20 | 2 |
| 17 | AXLE NUT M10x5.5 | 1 |

| ITEM No. | DESCRIPTION | QTY. |
|----------|----------------------------|------|
| 18 | AXLE NUT M10x7.5 | 3 |
| 19 | WASHER D19 x d10 x 2 | 2 |
| 20 | PIVOT AXLE D10x20 M6 | 2 |
| 21 | BEARING CAP D19 x d6.2 x 4 | 2 |
| 22 | M6X16 SCREW | 4 |
| 23 | BOLT M10x36 | 2 |
| 24 | BB-PLATE ISCG 05 | 1 |
| 25 | SCREW BOLT | 3 |
| 26 | CABLE HOLDER | 2 |
| 27 | SEAT CLAMP 34.9 | 1 |
| 28 | M5x20L-P SCREW BOLT | 1 |
| 29 | CABLE GUIDE | 2 |
| 30 | DISC MOUNT | 1 |
| 31 | SHOCK FENDER | 1 |
| 32 | FD HOLDER | 1 |



| PART NUMBER | DESCRIPTION | COMPONENTS |
|-------------|------------------------------|---|
| 099.15100 | SET 1: ZERO BEARING KIT 9 | BEARING 6900-2RS (Int 10mm. Ext 22mm) (x4) / BEARING 6000-2RS (Int 10mm. Ext 26mm) (x2) / BEARING 6800-2RS (Int 10mm. Ext 19mm) (x2) |
| 099.12002 | SET 2: SHOCK HARDWARE ZERO 1 | BOLT M10x36 (x2) |
| 099.15101 | SET 3: UPPER LINK KIT 13 | M6X16 SCREW (x2) / BEARING CAP D19 x d6.2 x 4 (x2) / PIVOT AXLE D10x20 M6 (x2) / WASHER D18 x d10 x 6.3 (x2) / PIVOT AXLE M10x20 (x2) / AXLE NUT M10x7.5 (x2) / WASHER D19 x d10 x 2 (x2) |
| 099.15102 | SET 4: LOWER LINK KIT 13 | SPACER D14x35 (x1) / SPACER D14 x d10 x 30 (x1) / WASHER D18 x d10 x 6.3 (x4) / PIVOT AXLE M10x68 (x1) / PIVOT AXLE (x1) / M10x64 (x1) / AXLE NUT M10x5.5 (x1) / AXLE NUT M10x7.5 (x1) |
| 099.00037 | SET 5: HANGER M056 | HANGER M056 (x1) / M5x15L-M SCREW BOLT (x1) |
| 099.00045 | SET 6: HANGER M056 XX1 | HANGER M056 XX1 (x1) / M5x15L-M SCREW BOLT (x1) |