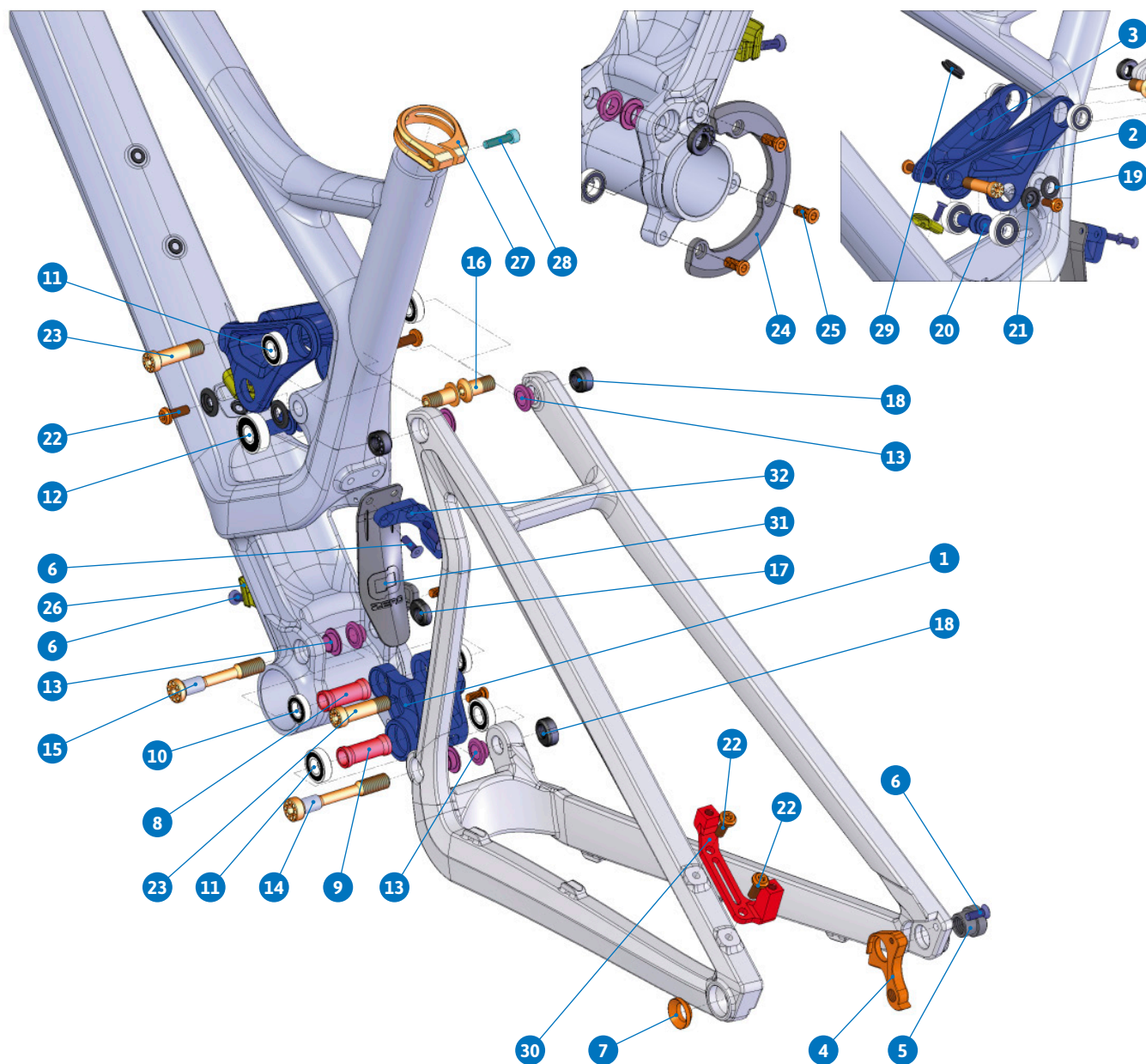
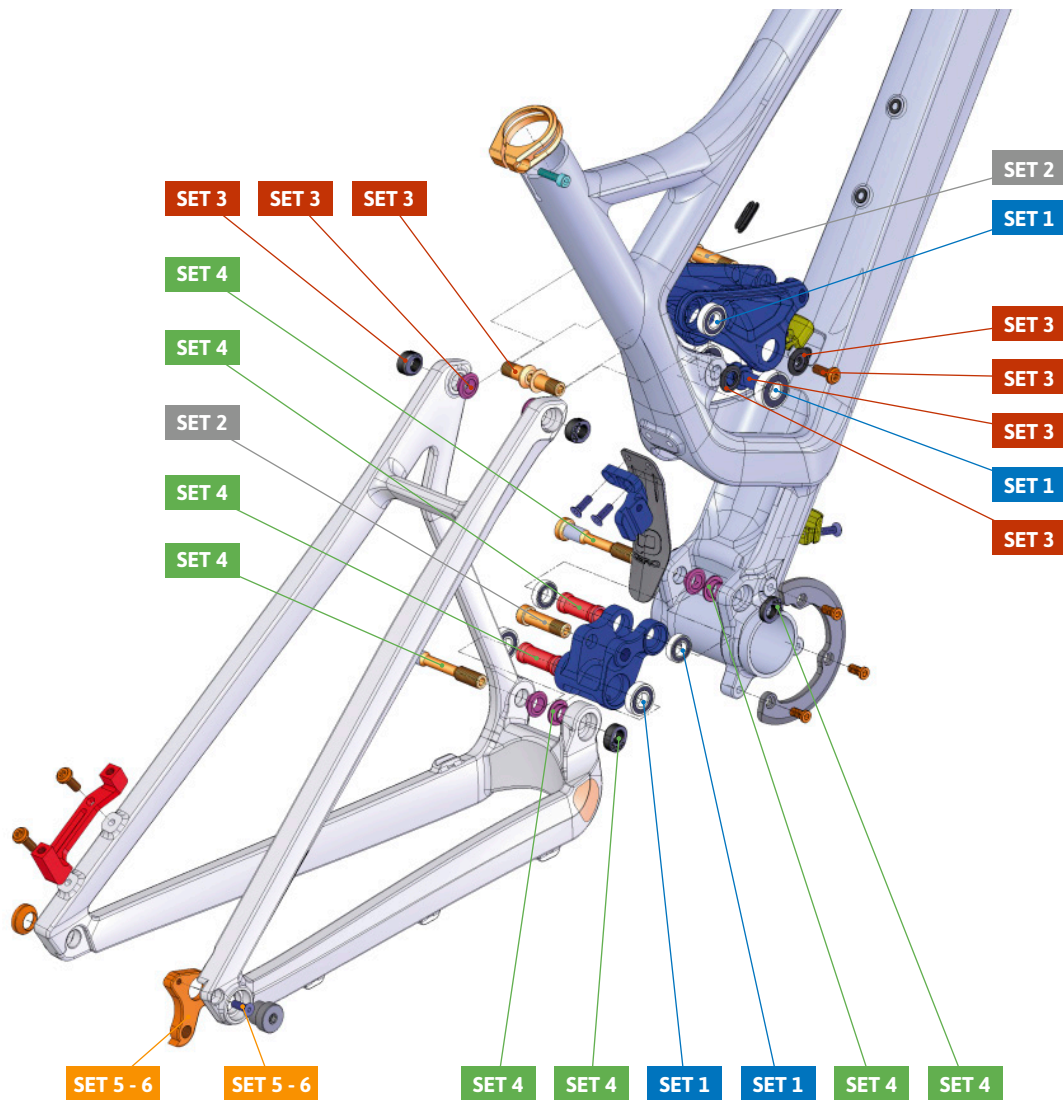


SPARE PARTS  
FOXY CARBON



ITEM No.	DESCRIPTION	QTY.
1	LOWER LINK	1
2 - 3	UPPER LINK	1
4	PATILLA M056	1
5	HUB NUT 12X142	1
6	M5x15L-M SCREW BOLT	5
7	WASHER 12X142	1
8	SPACER D14 x d10 x 30	1
9	SPACER D14 x d10 x 35	1
10	BEARING 6800-2RS (INT. 10mm. EXT 19mm)	2
11	BEARING 6900-2RS (INT. 10mm. EXT 22mm)	4
12	BEARING 6000-2RS (INT. 10mm. EXT 26mm)	2
13	WASHER D18 x d10 x 6.3	6
14	PIVOT AXLE M10x68	1
15	PIVOT AXLE M10x64	1
16	PIVOT AXLE M10x20	2
17	AXLE NUT M10x5.5	1

ITEM No.	DESCRIPTION	QTY.
18	AXLE NUT M10x7.5	3
19	WASHER D19 x d10 x 2	2
20	PIVOT AXLE D10x20 M6	2
21	BEARING CAP D19 x d6.2 x 4	2
22	M6X16 SCREW	4
23	BOLT M10x36	2
24	BB-PLATE ISCG 05	1
25	SCREW BOLT	3
26	CABLE HOLDER	2
27	SEAT CLAMP 34.9	1
28	M5x20L-P SCREW BOLT	1
29	CABLE GUIDE	2
30	DISC MOUNT	1
31	SHOCK FENDER	1
32	FD HOLDER	1



PART NUMBER	DESCRIPTION	COMPONENTS
099.15100	SET 1: ZERO BEARING KIT 9	BEARING 6900-2RS (Int 10mm. Ext 22mm) (x4) / BEARING 6000-2RS (Int 10mm. Ext 26mm) (x2) / BEARING 6800-2RS (Int 10mm. Ext 19mm) (x2)
099.12002	SET 2: SHOCK HARDWARE ZERO 1	BOLT M10x36 (x2)
099.15101	SET 3: UPPER LINK KIT 13	M6X16 SCREW (x2) / BEARING CAP D19 x d6.2 x 4 (x2) / PIVOT AXLE D10x20 M6 (x2) / WASHER D18 x d10 x 6.3 (x2) / PIVOT AXLE M10x20 (x2) / AXLE NUT M10x7.5 (x2) / WASHER D19 x d10 x 2 (x2)
099.15102	SET 4: LOWER LINK KIT 13	SPACER D14x35 (x1) / SPACER D14 x d10 x 30 (x1) / WASHER D18 x d10 x 6.3 (x4) / PIVOT AXLE M10x68 (x1) / PIVOT AXLE (x1) / M10x64 (x1) / AXLE NUT M10x5.5 (x1) / AXLE NUT M10x7.5 (x1)
099.00037	SET 5: HANGER M056	HANGER M056 (x1) / M5x15L-M SCREW BOLT (x1)
099.00045	SET 6: HANGER M056 XX1	HANGER M056 XX1 (x1) / M5x15L-M SCREW BOLT (x1)