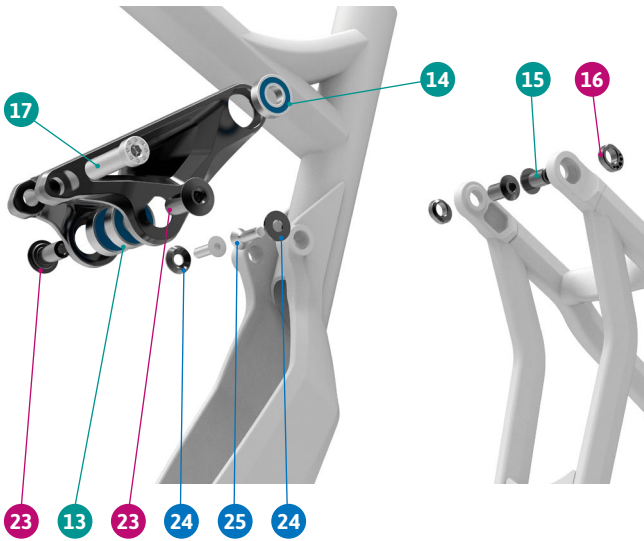


ITEM No.	DESCRIPTION	QTY.	PART NUMBER	TORQUE
1	FRONT TRIANGLE	1		
2	REAR TRIANGLE	1		
3	LOWER LINK	1		
4	UPPER LINK, LEFT	1		
5	UPPER LINK, RIGHT	1		
6	BEARING, 12X24X6	4	SET1	
7	SPACER, 27MM	2	SET4	
8	SPACER, 3MM	4	SET4	
9	PIVOT AXLE, 70.5MM	1	SET4	8Nm
10	TAPER NUT	2	SET4	
11	SPACER	2	SET4	
12	SCREW BOLT	2	SET4	10Nm
13	BEARING, 10x26x8	2	SET1	
14	BEARING, 10x22x6	2	SET1	
15	PIVOT AXLE	2	SET3	11Nm
16	AXLE NUT	2	SET3	
17	SLEEVE BOLT	2	SET2	12Nm
18	HANGER	1	SET5	
19	HANGER NUT	1	SET5	4Nm

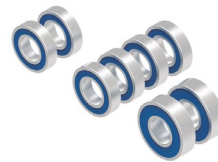
ITEM No.	DESCRIPTION	QTY.	PART NUMBER	TORQUE
20	MOTOR COVER	1	099.16013	
21	SCREW BOLT	2		3Nm
22	SCREW BOLT	2		4Nm
23	PIVOT AXLE	2	SET3	10Nm
24	BEARING CAP	2	SET3	
25	SCREW BOLT	2		
26	CABLE RUBBER	4	989.13010	
27	SPACER	2		
28	RUBBER PIECE	1	099.16014	
29	RIGHT SIDE COVER	1	099.16017	
30	SCREW BOLT	3		3Nm
31	PIVOT AXLE, 70.5MM	1	SET4	8Nm
32	PULLEY	1	SET 6	
33	BEARING, 28X15X7	1	SET 6	
34	C-RING	1	SET 6	
35	TAPER SPACER	1	SET 6	
36	SCREW BOLT	1	SET 6	8Nm
37	SPACER	1	SET 6	

DETAIL 01



SET 1

ZERO BEARING KIT 12

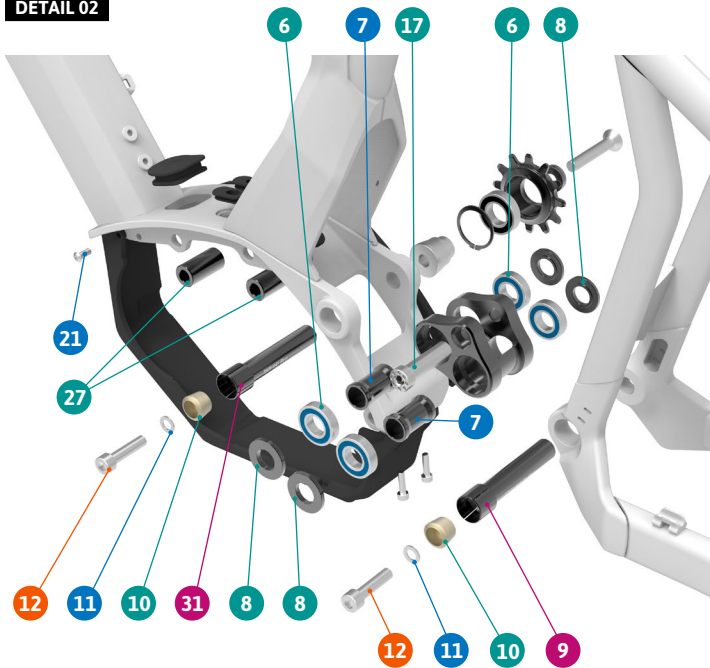


SET 2

SHOCK HARDWARE ZERO 1



DETAIL 02



SET 3

UPPER LINK KIT 18



SET 4

LOWER LINK KIT 22



SET 5

HANGER M067



SET 6

PULLEY KIT



PART NUMBER	DESCRIPTION	COMPONENTS
099.16111	SET 1: ZERO BEARING KIT 12	BEARING, 12X24X6 (x4) / BEARING, 10x26x8 (x2) / BEARING, 10x22x6 (x2)
099.12002	SET 2: SHOCK HARDWARE ZERO 1	SLEEVE BOLT (x2)
099.16112	SET 3: UPPER LINK KIT 18	PIVOT AXLE (x2) / AXLE NUT (x2) / PIVOT AXLE (x2) / BEARING CAP (x2) / SCREW BOLT (x2)
099.18112	SET 4: LOWER LINK KIT 22	SPACER, 27MM (x2) / SPACER, 3MM (x4) / PIVOT AXLE, 70.5MM (x1) / TAPER NUT (x2) / SPACER (x2) / SCREW BOLT (x2) / PIVOT AXLE, 70.5MM (x1)
099.00054	SET 5: HANGER M067	HANGER (x1), HANGER NUT (x1)
099.17110	SET 6: PULLEY KIT	SCREW FOR PULLEY (x1) / PULLEY 7075-T6 ANODIZED BLACK (x1) / SCREW (x1) / BEARING (x1) / C CLIP (x1) / WASHER (x1)