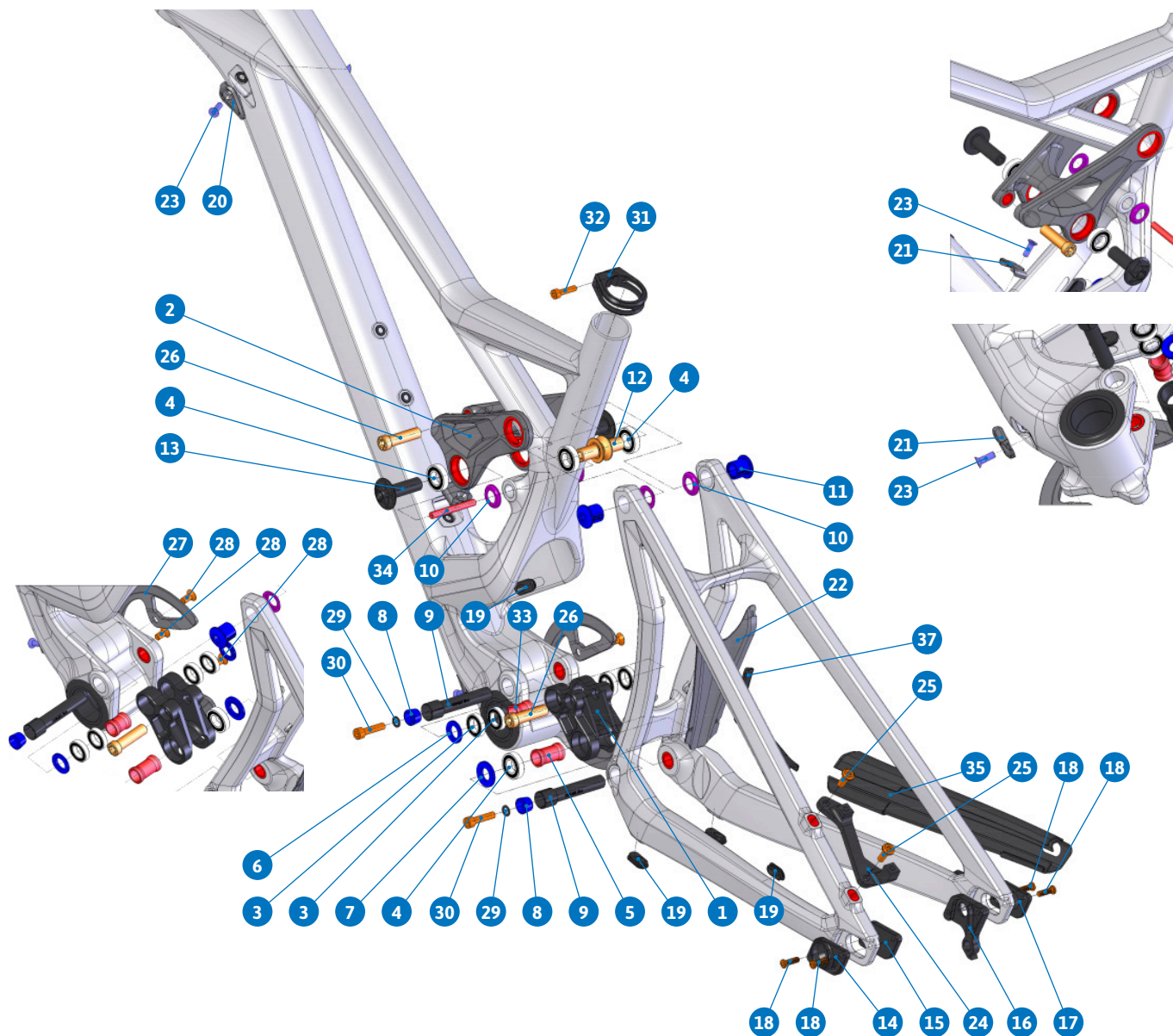


SPARE PARTS  
DUNE CARBON



ITEM No.	DESCRIPTION	QTY.
1	LOWER LINK	1
2	UPPER LINK	1
3	BEARING 6801V-2RS (INT. 12mm. EXT 21mm)	4
4	BEARING 6901V-2RS (INT. 12mm. EXT 24mm)	6
5	SPACER D16xD12x27	1
6	SPACER D20.5xD12x3mm	2
7	SPACER D23.5xD12x3mm	2
8	TAPER NUT 10.5mm	2
9	PIVOT AXLE M12X70.5mm	2
10	SPACER D21.5xD12x3mm	4
11	PIVOT AXLE D16x14mm	2
12	PIVOT AXLE M12x18mm	2
13	PIVOT AXLE D12x37mm	2
14	CHIP LEFT	1
15	HANGER M065 LEFT	1
16	HANGER M065	1
17	CHIP RIGHT	1
18	SCREW BOLT	4

ITEM No.	DESCRIPTION	QTY.
19	CABLE RUBBER	5
20	CABLE HOLDER	2
21	CABLE HOLDER	2
22	FENDER	1
23	M5x15L-M SCREW BOLT	4
24	POST MOUNT ADAPTOR	1
25	M6X16 SCREW	2
26	BOLT M10x36	2
27	BASH GUARD ISCG 05	1
28	M6x12L-M-S SCREW	3
29	SPACER D10XD6X1mm	2
30	M6x25L-P-S SCREW BOLT	2
31	SEAT CLAMP 34.9	1
32	M5x20L-P SCREW BOLT	1
33	SPACER D16xD12x19mm	1
34	SCREW AXLE M6x50	1
35	CHAINSTAY PROTECTOR	1
36	SEATSTAY PROTECTOR	1

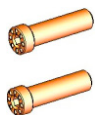
**SET 1**

ZERO BEARING KIT 11



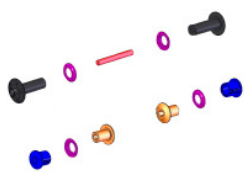
**SET 2**

SHOCK HARDWARE ZERO 1



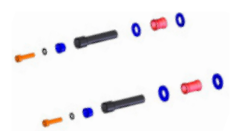
**SET 3**

UPPER LINK HARDWARE KIT 16



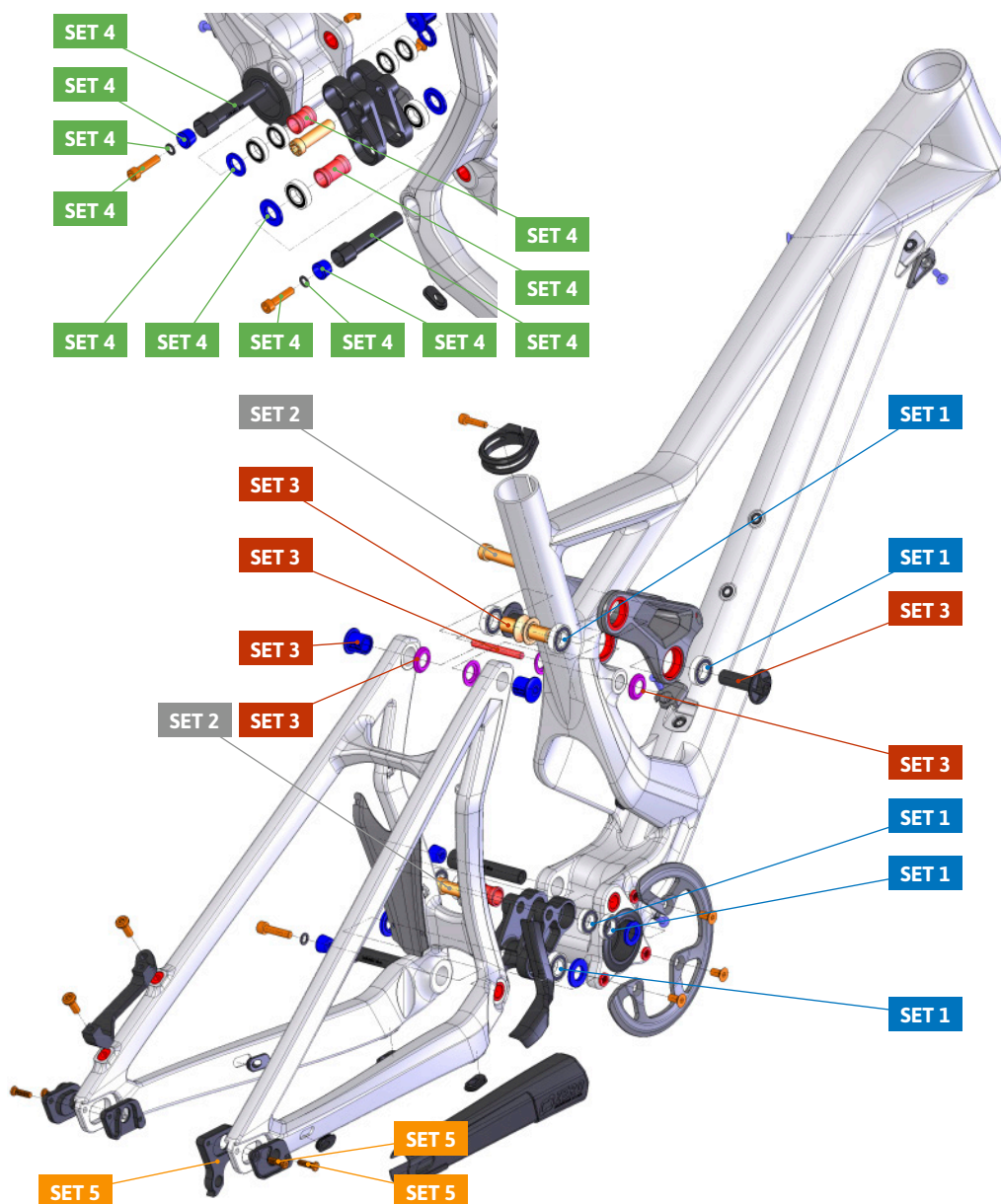
**SET 4**

LOWER LINK HARDWARE KIT 16



**SET 5**

HANGER



PART NUMBER	DESCRIPTION	COMPONENTS
099.16103	SET 1: ZERO BEARING KIT 11	BEARING 6801V-2RS (INT. 12mm. EXT 21mm) (x6) / BEARING 6901V-2RS (INT. 12mm. EXT 24mm) (x4)
099.12002	SET 2: SHOCK KIT HARDWARE ZERO 1	BOLT M10x36 (x2)
099.16104	SET 3: UPPER LINK HARDWARE KIT 16	SCREW AXLE M6x50mm (x1) / SPACER D21.5xD12x3mm (x4) / PIVOT AXLE D12x37mm (x2) / PIVOT AXLE D16x14mm (x2) / PIVOT AXLE M12x18mm (x2)
099.16105	SET 4: LOWER LINK HARDWARE KIT 16	SPACER D23.5xD12x3mm (x2) / SPACER D20.5xD12x3mm (x2) / SPACER D10xD6X1mm (x2) / TAPER NUT 10.5mm (x2) / M6x25L-P-S SCREW BOLT (x2) / PIVOT AXLE M12X70.5mm (x2) / SPACER D16xD12x27 (x1) / SPACER D16xD12x19mm (x1)
099.00050	HANGER	HANGER M065 + SCREW BOLT (x2)
099.00052	HANGER +10mm	HANGER M065 (+10mm) + SCREW BOLT (x2)
099.16106	DROPOUT KIT DUNE C	CS-CHIP, LEFT, OUTER (x1) / HANGER M065 LEFT (x1) / CS-CHIP, RIGHT, OUTER (x1) / SCREW BOLT (x4)
099.16100	GEOMETRY KIT DUNE C S/M	HEADSET CUP, LOWER +/-1° (x1) / HEADSET CUP, UPPER, 110L +/-1° (x1) / HEADSET CUP, LOWER 0° (x1) / HEADSET CUP, UPPER 0° (x1) / CS-CHIP, LEFT, OUTER +10mm (x1) / CS-CHIP, RIGHT, OUTER +10mm (x1) / HANGER M065 LEFT +10mm (x1) / HANGER M065 +10mm (x1) / DISC MOUNT +10mm (x1) / SCREW BOLT (x4)
099.16101	GEOMETRY KIT DUNE C L	HEADSET CUP, LOWER +/-1° (x1) / HEADSET CUP, UPPER, 120L +/-1° (x1) / HEADSET CUP, LOWER 0° (x1) / HEADSET CUP, UPPER 0° (x1) / CS-CHIP, LEFT, OUTER +10mm (x1) / CS-CHIP, RIGHT, OUTER +10mm (x1) / HANGER M065 LEFT +10mm (x1) / HANGER M065 +10mm (x1) / DISC MOUNT +10mm (x1) / SCREW BOLT (x4)
099.16102	GEOMETRY KIT DUNE C XL	HEADSET CUP, LOWER +/-1° (x1) / HEADSET CUP, UPPER, 130L +/-1° (x1) / HEADSET CUP, LOWER 0° (x1) / HEADSET CUP, UPPER 0° (x1) / CS-CHIP, LEFT, OUTER +10mm (x1) / CS-CHIP, RIGHT, OUTER +10mm (x1) / HANGER M065 LEFT +10mm (x1) / HANGER M065 +10mm (x1) / DISC MOUNT +10mm (x1) / SCREW BOLT (x4)